

KeraTwin® K20

VERTIKALVERLEGUNG

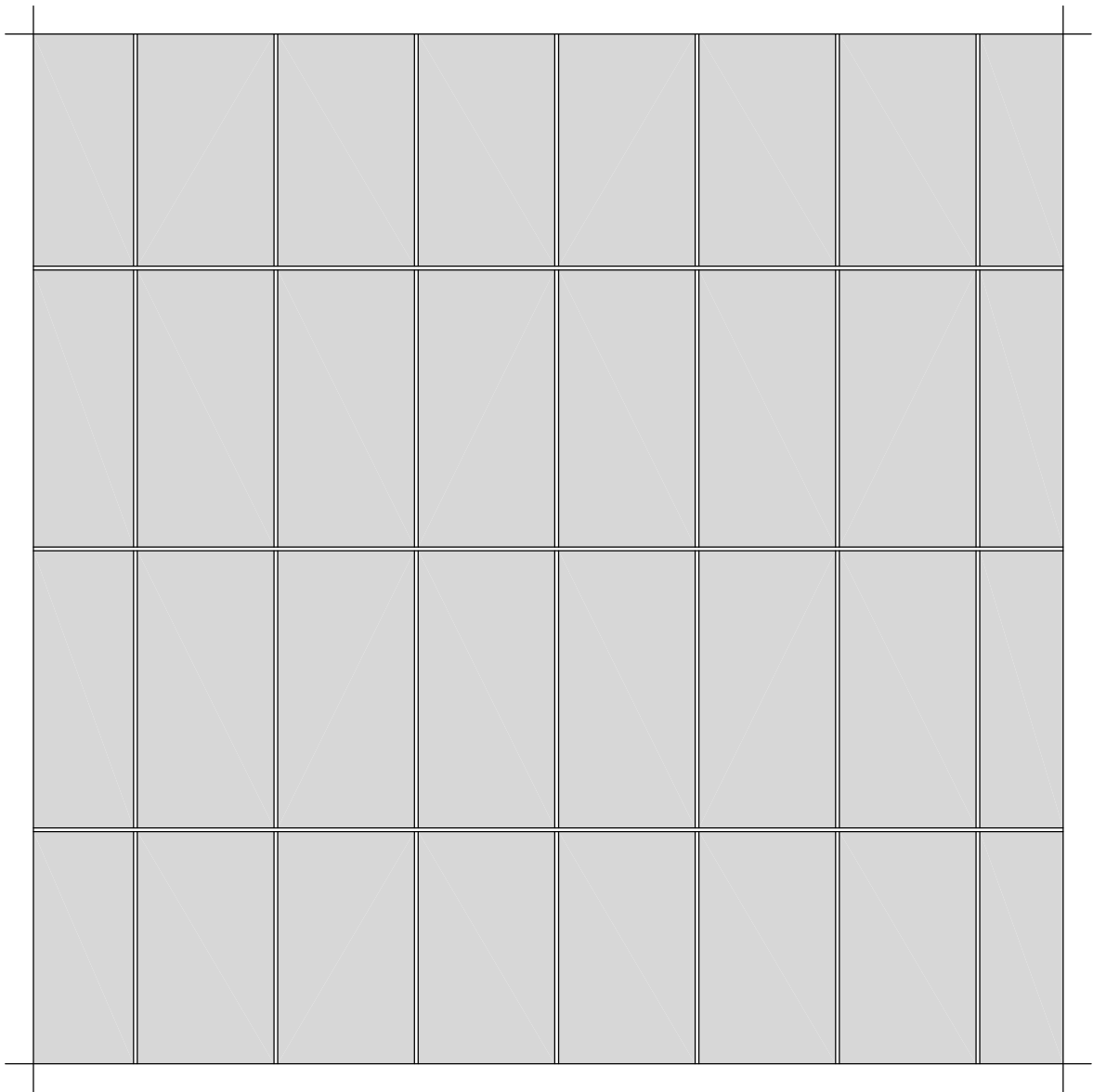
VERTICAL FIXING

FIXATION VERTICALE


NICHT SICHTBARE BEFESTIGUNG MIT KLAMMERN K20

INVISIBLE FASTENING WITH CLAMP K20

FIXATION NON APPARANTE PAR AGRAFE K20



WEITERE OBJEKTSPEZIFISCHE DETAILS AUF ANFRAGE  
FURTHER PROJECT-RELATED DETAILS UPON REQUEST  
D'AUTRES DETAILS RELATIFS AU PROJET SUR DEMANDE

DEUTSCHE  **AGROB BUCHTAL** AGROB BUCHTAL GmbH Architektenservice D - 92519 Schwarzenfeld  
Tel. 09435 / 391 3308 Fax. 09435 / 391 3442 e-mail: as.fassade@deutsche-steinzeug.de

STAND: MAI 2011

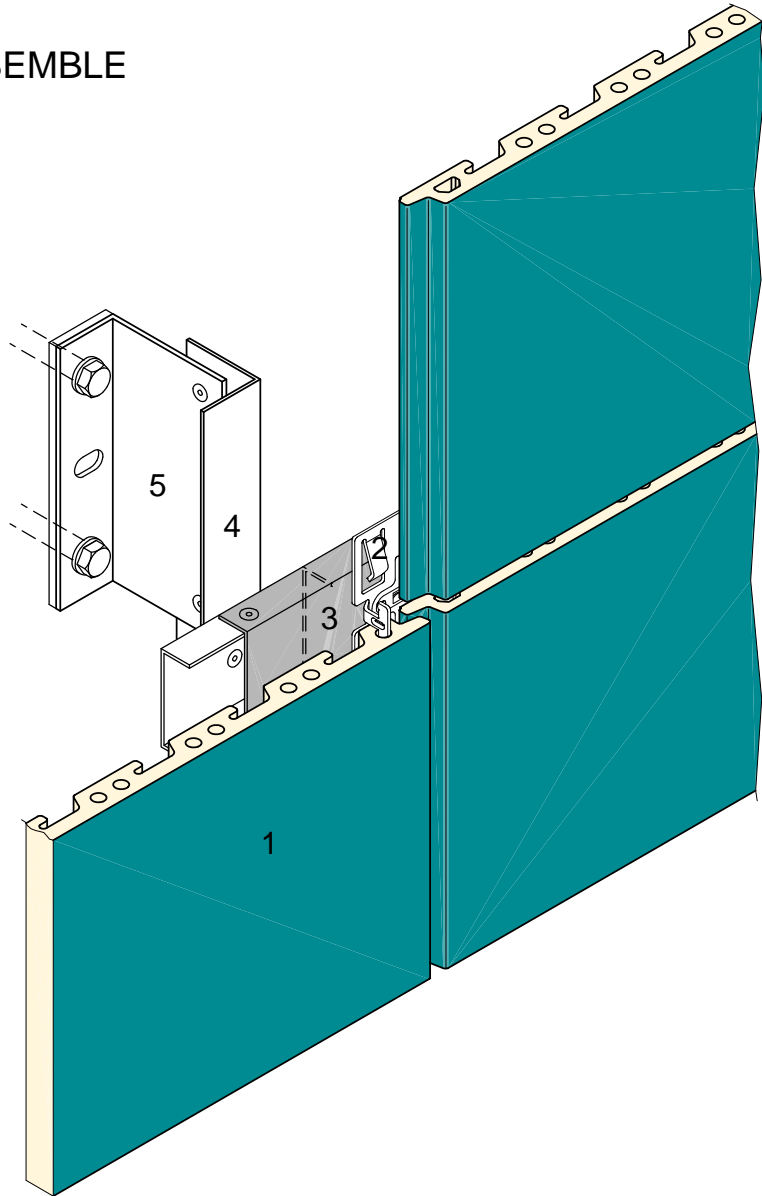
DIES SIND UNVERBINDLICHE KONSTRUKTIONSVORSCHLÄGE, DIE FÜR JEDES PROJEKT AUF ANWENDBARKEIT UND RICHTIGKEIT GEPRÜFT WERDEN MÜSSEN.  
THESE ARE NOT BINDING CONSTRUCTION PROPOSALS WHICH HAVE TO BE VERIFIED FOR EACH INDIVIDUAL PROJECT AS REGARDS APPLICABILITY AND CORRECTNESS.  
IL S' AGIT DE PROPOSITIONS DE CONSTRUCTION SANS ENGAGEMENT DE NOTRE PART QUI DOIVENT ETRE VERIFIEES POUR CHAQUE PROJET A LEUR EXACTITUDE ET FAISABILITE.

# SYSTEMÜBERSICHT

SYSTEM SCHEME  
SYSTEME - VUE D' ENSEMBLE

KeraTwin® K20

VERTIKALVERLEGUNG  
VERTICAL FIXING  
FIXATION VERTICALE



- 1 - KERATWIN K20 - FASSADENPLATTE
- 2 - BEFESTIGUNGSKLAMMER SYSTEM K20
- 3 - HORIZONTALES TRAGPROFIL
- 4 - VERTIKALES TRAGPROFIL
- 5 - ALUMINIUM-WANDHALTER

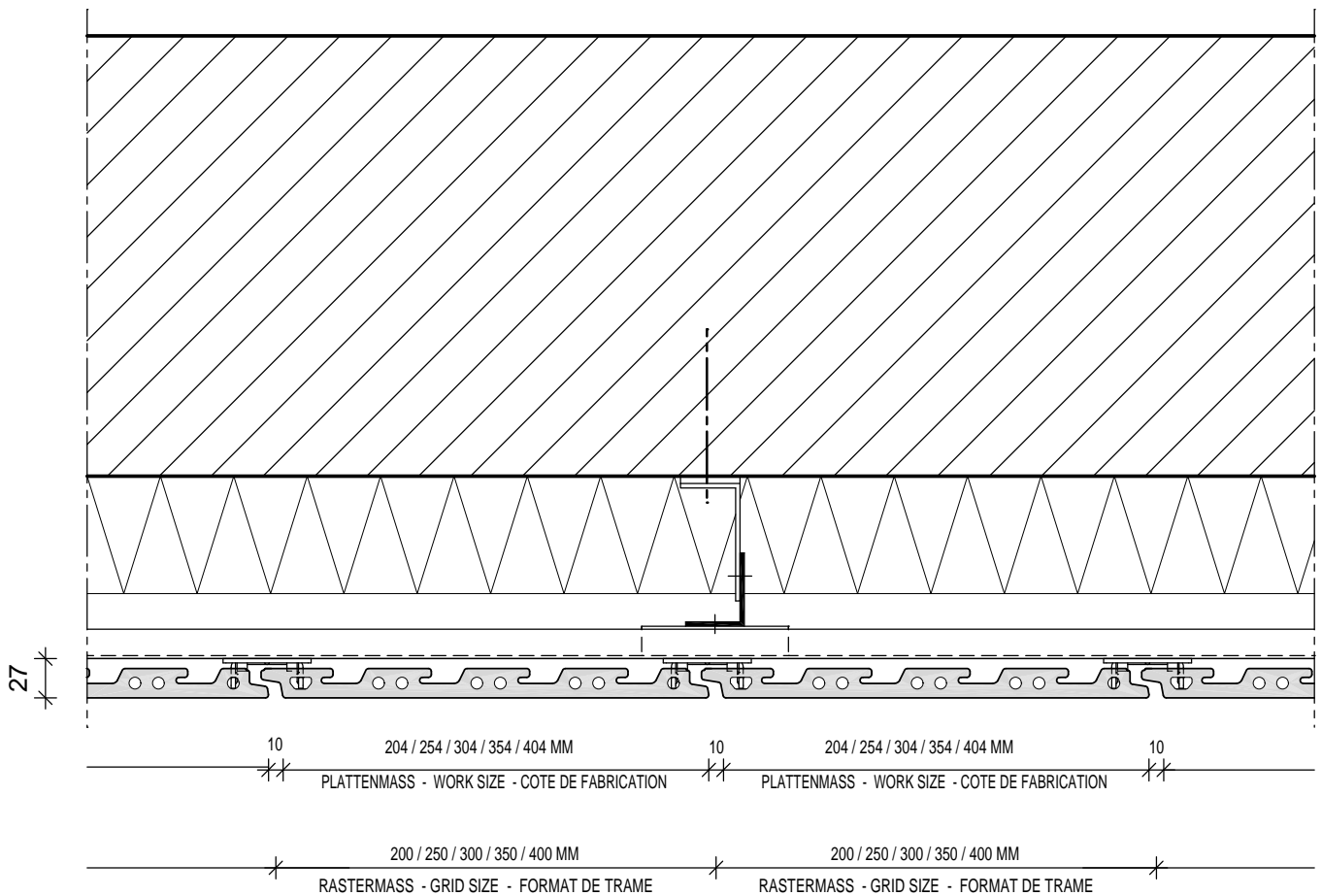
- 1 - KERATWIN K20 - PANEL
- 2 - FASTENING CLAMP SYSTEM K20
- 3 - HORIZONTAL BEARING PROFILE
- 4 - VERTICAL BEARING PROFILE
- 5 - ALUMINIUM WALL BRACKET

- 1 - DALLE KERATWIN K20
- 2 - AGRAFE DE FIXATION SYSTEME K20
- 3 - PROFILE PORTEUR HORIZONTAL
- 4 - PROFILE PORTEUR VERTICAL
- 5 - PIECE DE SUPPORT MURAL EN ALUMINIUM

# SYSTEMSCHNITT HORIZONTAL

HORIZONTAL SECTION  
COUPE HORIZONTALE

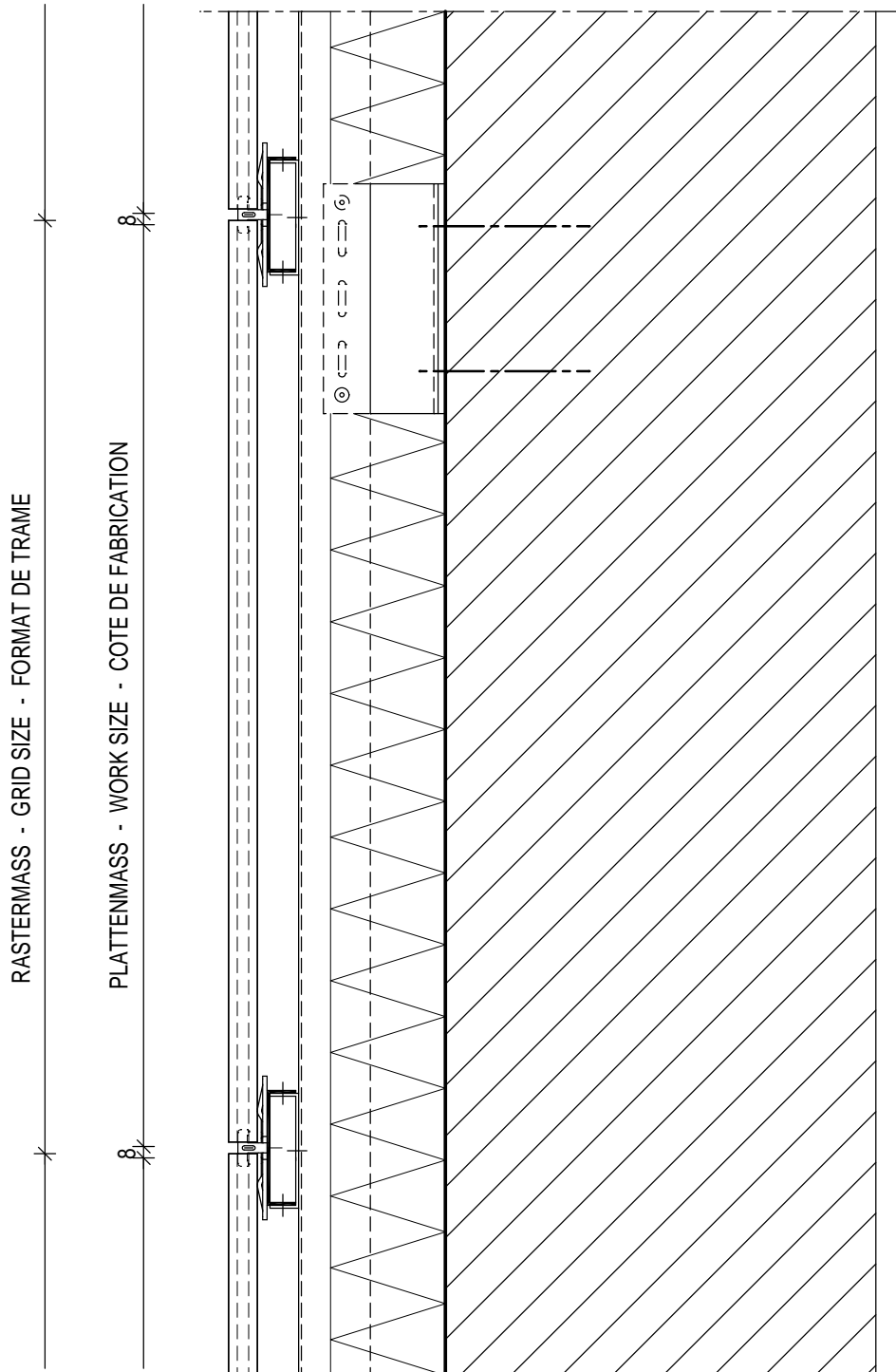
KeraTwin® K20



# SYSTEMSCHNITT VERTIKAL

VERTICAL SECTION  
COUPE VERTICALE

KeraTwin<sup>®</sup> K20



**DEUTSCHE STEINZEUG**  **AGROB BUCHTAL**

AGROB BUCHTAL GmbH Architektenservice D - 92519 Schwarzenfeld  
Tel. 09435 / 391 3308 Fax. 09435 / 391 3442 e-mail: as.fassade@deutsche-steinzeug.de

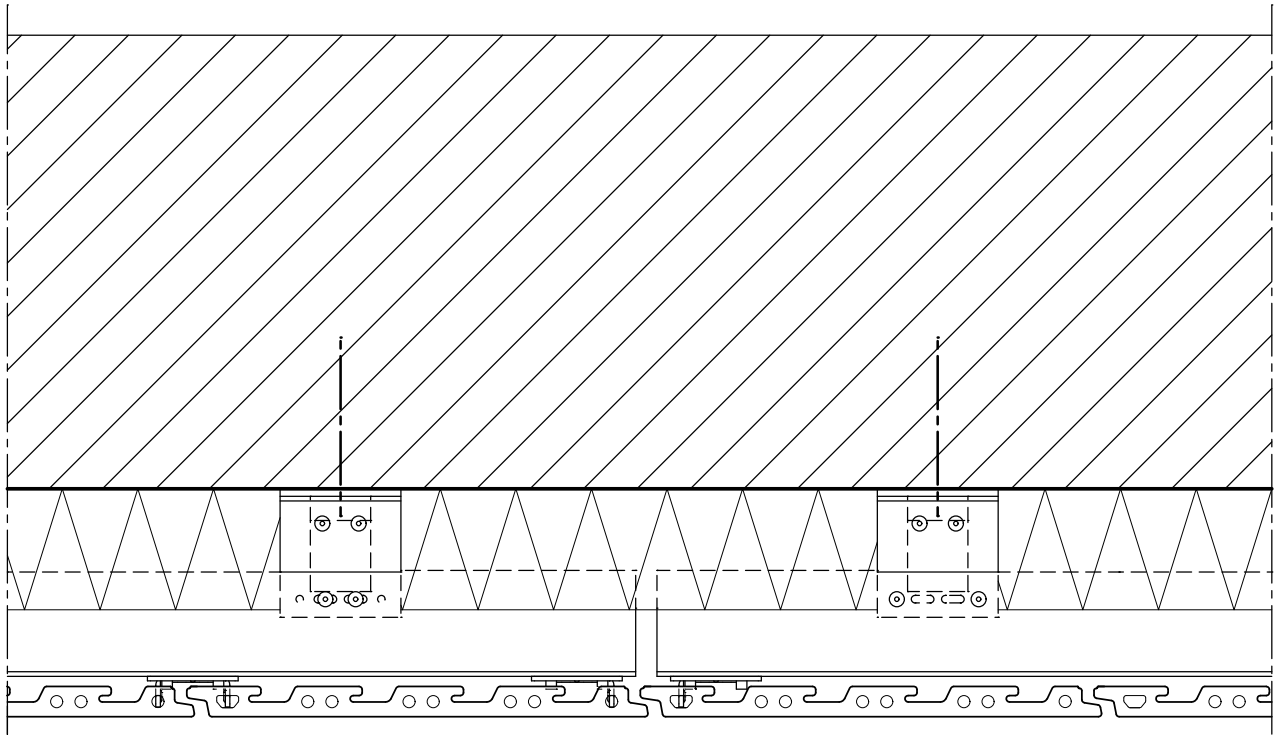
STAND: OKTOBER 2011

DIES SIND UNVERBINDLICHE KONSTRUKTIONSVORSCHLÄGE, DIE FÜR JEDES PROJEKT AUF ANWENDBARKEIT UND RICHTIGKEIT GEPRÜFT WERDEN MÜSSEN.  
THESE ARE NOT BINDING CONSTRUCTION PROPOSALS WHICH HAVE TO BE VERIFIED FOR EACH INDIVIDUAL PROJECT AS REGARDS APPLICABILITY AND CORRECTNESS.  
IL S' AGIT DE PROPOSITIONS DE CONSTRUCTION SANS ENGAGEMENT DE NOTRE PART QUI DOIVENT ETRE VERIFIEES POUR CHAQUE PROJET A LEUR EXACTITUDE ET FAISABILITE.

# PROFILSTOSS HORIZONTAL

HORIZONTAL BUTT-JOINT OF PROFILES  
BOUT DE PROFILE HORIZONTALE

KeraTwin<sup>®</sup> K20

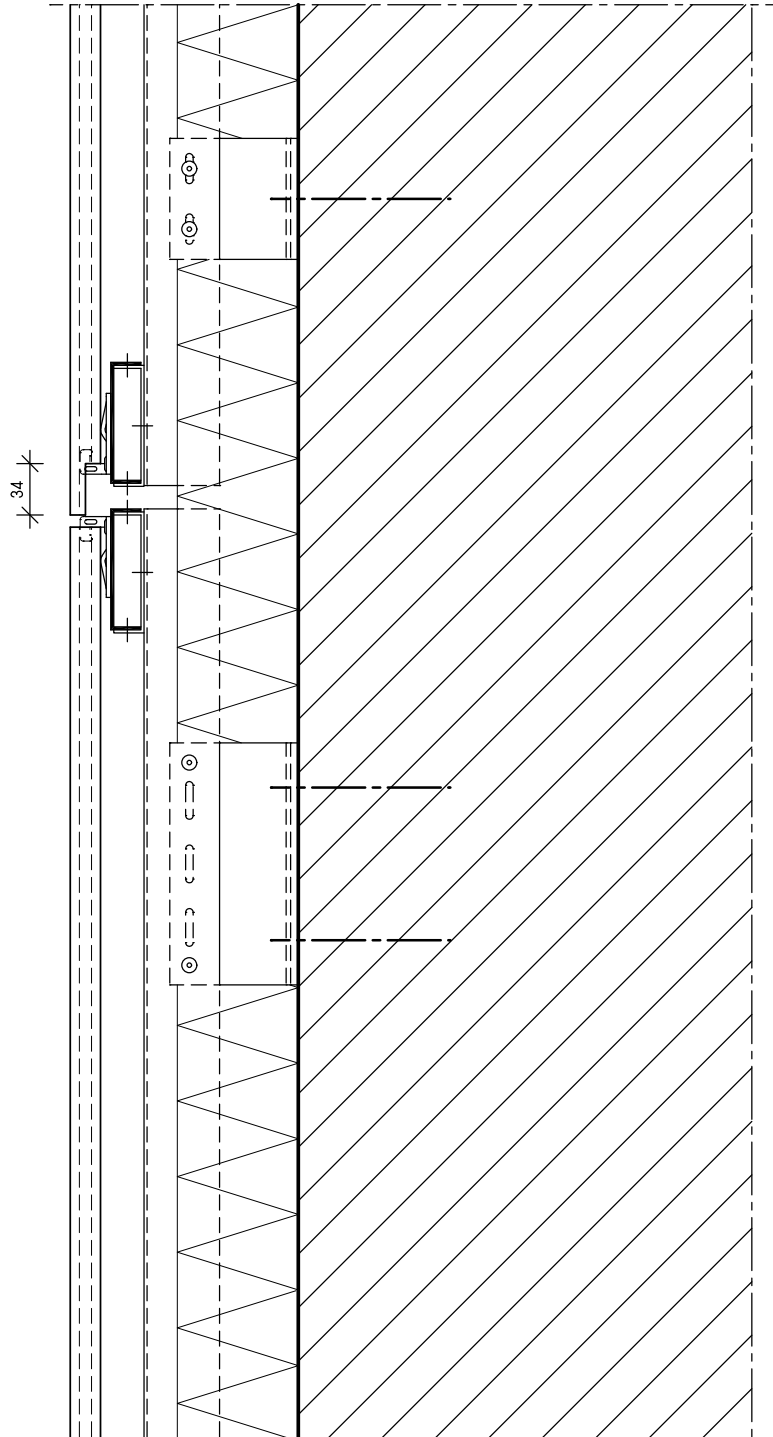


# PROFILSTOSS VERTIKAL

BUTT-JOINT OF PROFILES

VERTICAL BOUT DE PROFILE VERTICALE

KeraTwin<sup>®</sup> K20

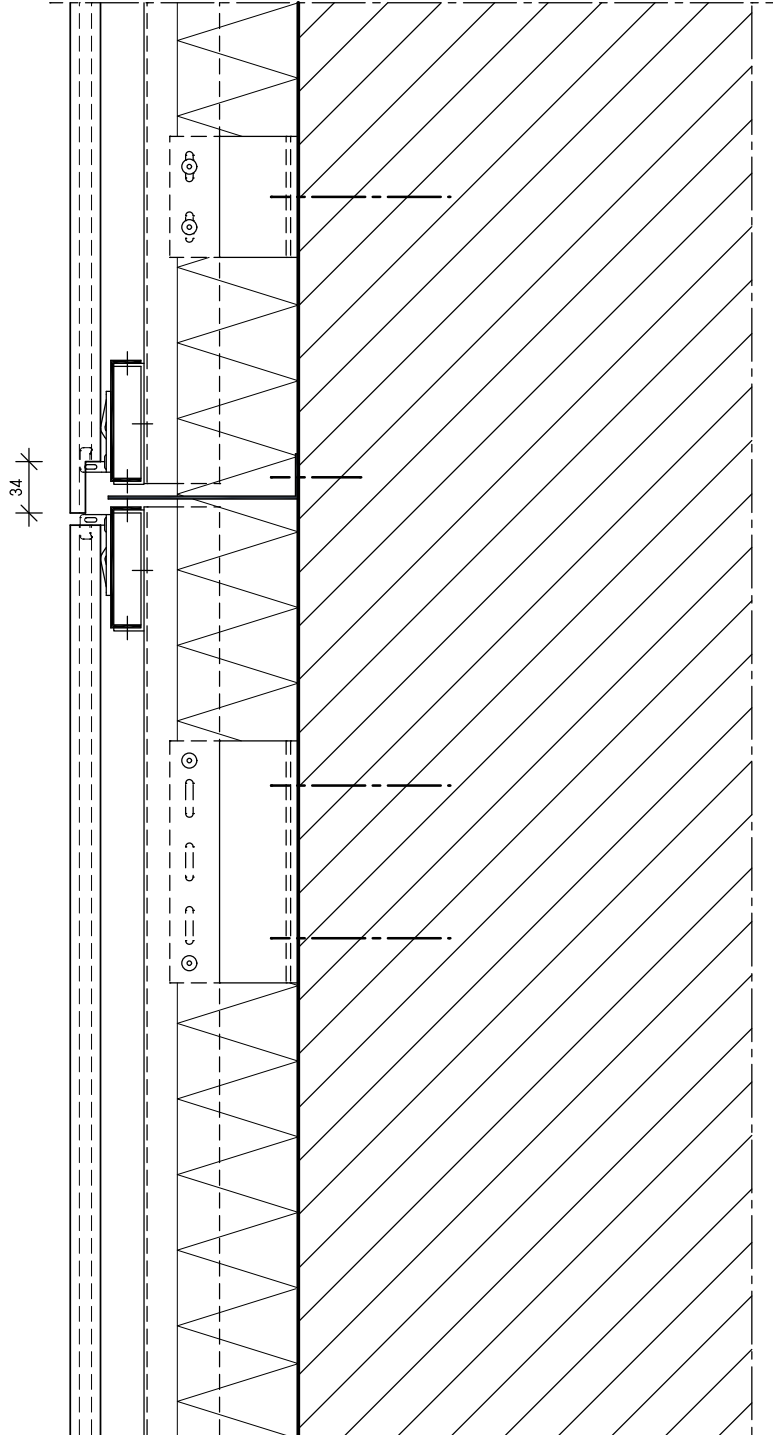


# BRANDSPERRE

FIRE BARRIER

PARE-FEU

KeraTwin® K20

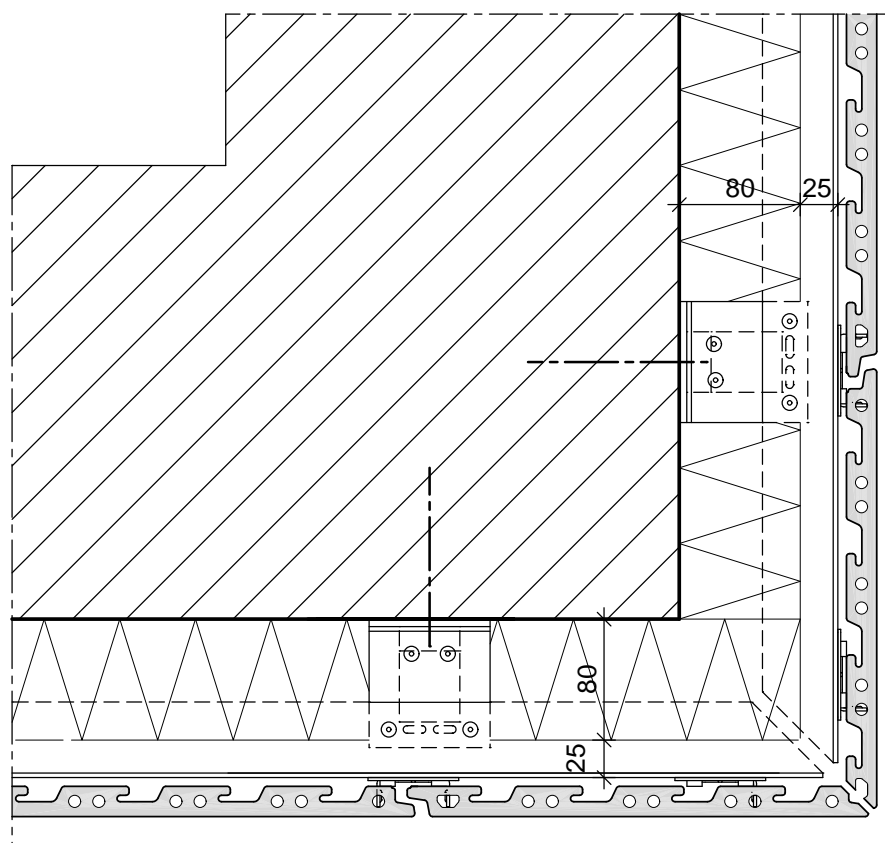


# AUSSENECKE MIT GEHRUNGSPLATTEN

EXTERNAL ANGLE WITH MITRED TILES

ANGLE EXTERIEUR AVEC CARREAUX EN BIAIS

KeraTwin® K20

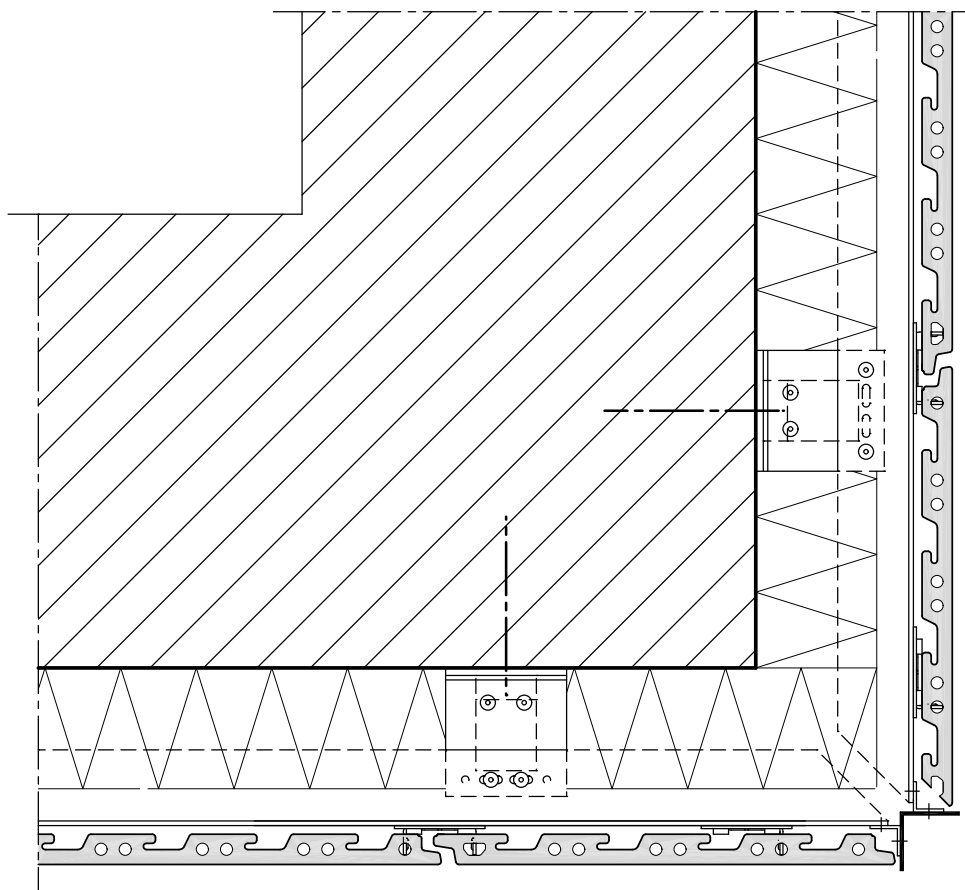




# AUSSENECKE MIT NEGATIVECKE

EXTERNAL ANGLE WITH NEGATIVE CORNER PROFILE  
ANGLE EXTERIEUR AVEC PROFILE D' ANGLE NEGATIF

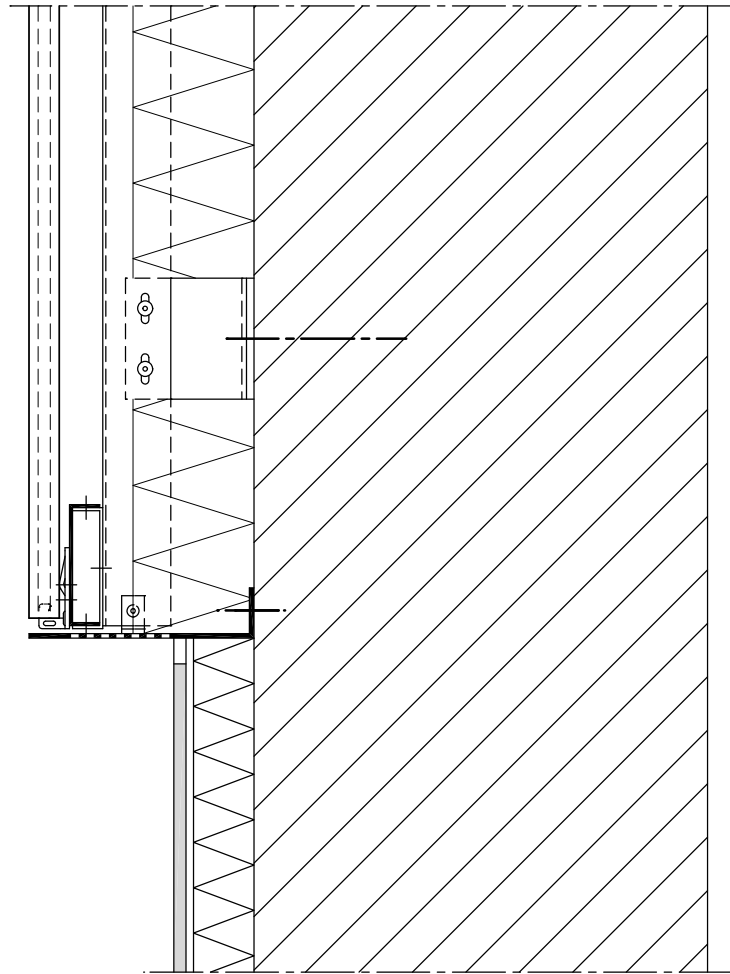
KeraTwin® K20



# SOCKELANSCHLUSS

CONNECTION TO PLINTH  
RACCORD DE SOCLE

KeraTwin® K20

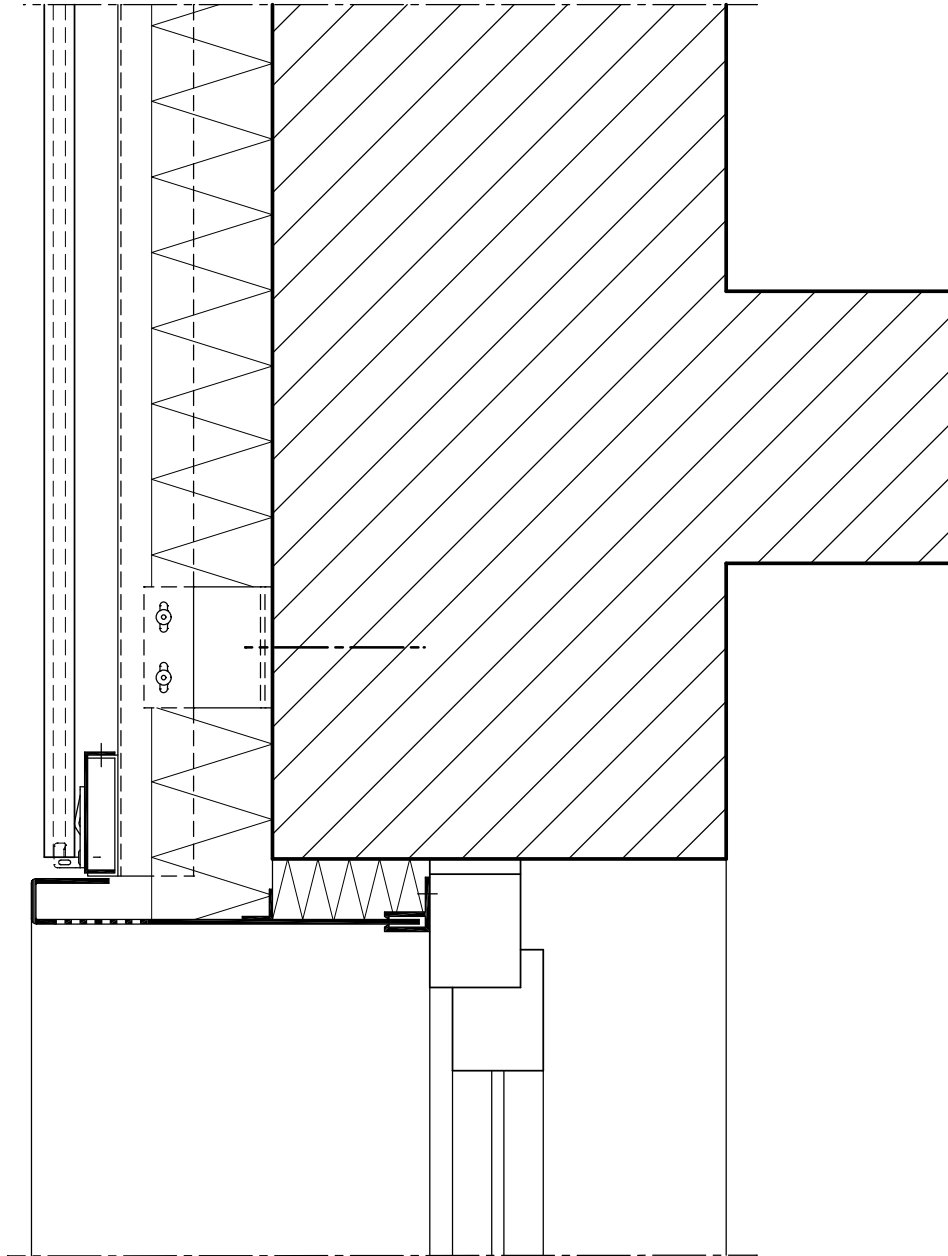


# FENSTERSTURZ

WINDOW LINTEL

LINTEAU DE LA FENETRE

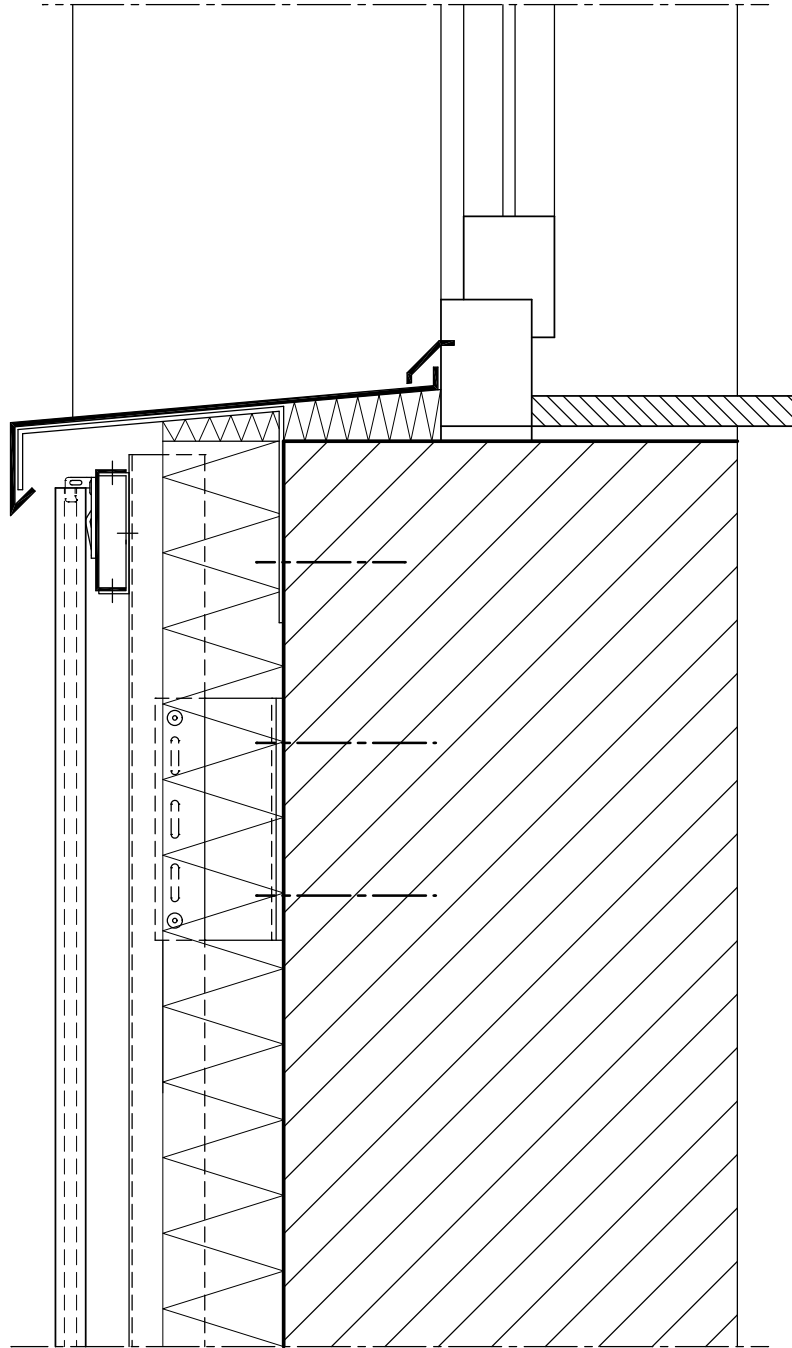
KeraTwin® K20



# FENSTERBANK

WINDOW SILL  
APPUI DE FENETRE

KeraTwin® K20

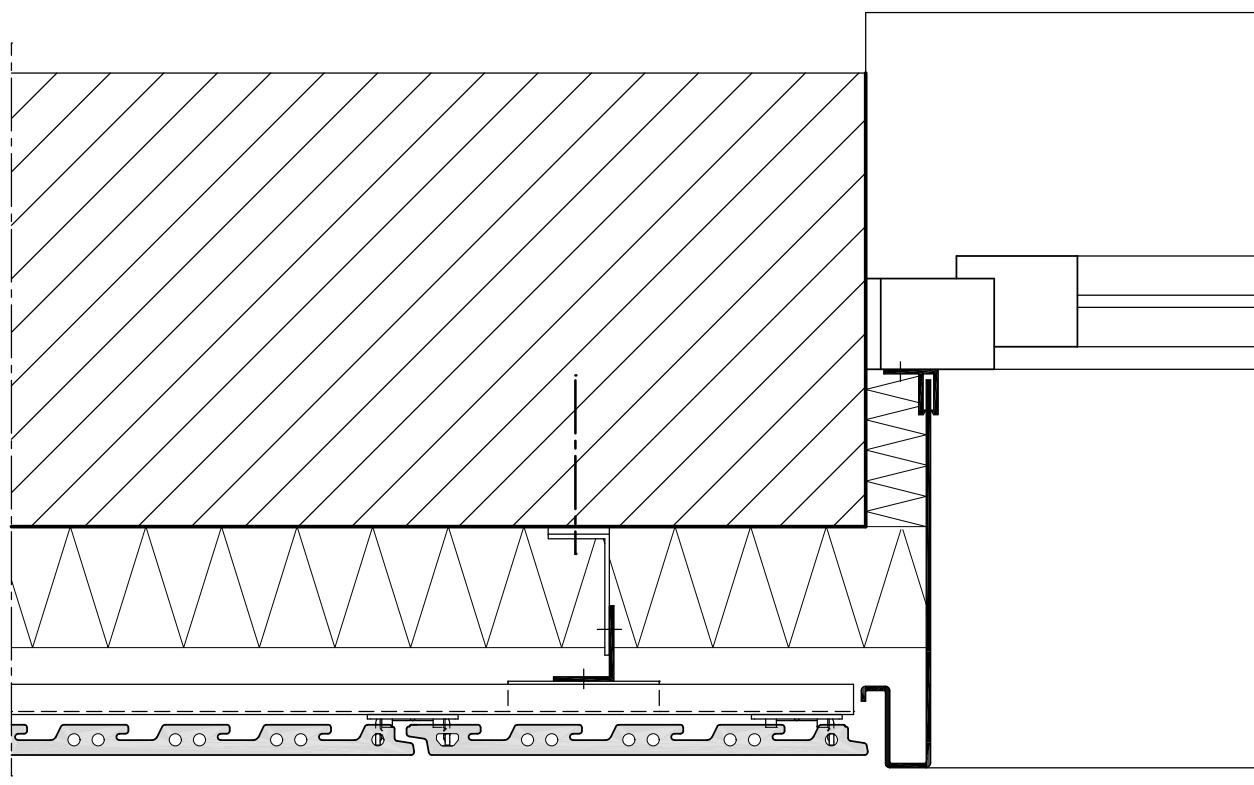


# FENSTERLEIBUNG MIT BLECH

EMBRASURE OF THE WINDOW

EMBRASURE DE FENETRE

KeraTwin® K20

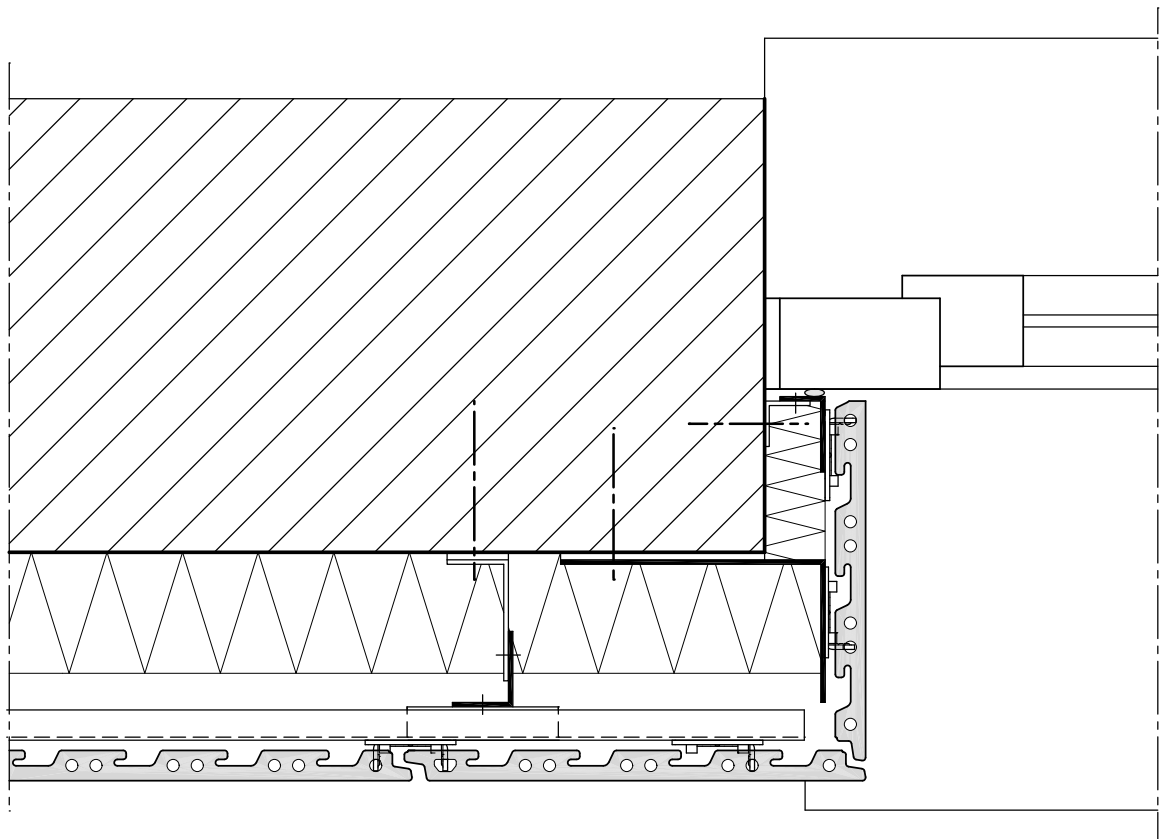


# FENSTERLEIBUNG MIT KERATWIN

EMBRASURE OF THE WINDOW WITH KERATWIN

EMBRASURE DE FENETRE AVEC KERATWIN

KeraTwin<sup>®</sup> K20



# DACHABSCHLUSS

COVERING OF THE ROOF PARAPET  
RECOUVREMENT D' ATTIQUE

KeraTwin® K20

